

Don't Waste Your Time & Money!!!

TRUCK BED, BUCKET AND SILO LINING with ULPOLEN®



With dumpers and buckets lined with Ulpolen®:

- Excavation volume doubles where clay, mud and humidity pose problems.
- Fast outflow of material with minimum dump bed inclination.
- Nothing sticks onto the surface of Ulpolen®.
- Ulpolen® does not wear out; is unaffected by environmental conditions.



Truck bed and bucket producers increase efficiency and extend equipment life by using Ulpolen®.

Non-stick properties and low coefficient of friction of Ulpolen® prevent deposits and agglomeration and enable fast outflow.

Surface resistivity of Ulpolen® is higher than that of steel. Truck beds and buckets lined with Ulpolen® are protected against both corrosion and wear.

In some special applications antistatic Ulpolen® is used to prevent sparking and explosion.



Beds lined with a special type of Ulpolen® are resistant to hot asphalt and function upto +175°C without asphalt sticking on them.

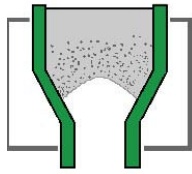
By lining your dump trucks and buckets with Ulpolen®, you not only speed up your excavation time, but also decrease fuel consumption. Due to its low coefficient of friction, you can empty the truck bed with a 30% less inclination. Ulpolen® helps improve equipment life as shaking the bed to remove remainders becomes unnecessary.



Ulpolen®, Efalon® and Kestamid® are registered trademarks of Polikim.

Silo, Bunker Linings

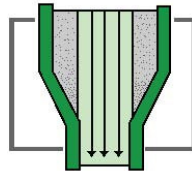
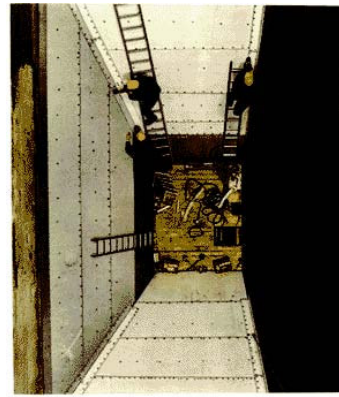
Wear and flow problems are very often the case in stocking and transporting materials such as **COAL, CEMENT, SAND, LIMESTONE, SALT, CLAY, GRAINS** etc.



BRIDGING, CLOGGING

Material forms bridges and does not flow as a result of congestion. Result is extremely negative.

- Interrupted and irregular flow occurs; flow can even stop completely.
- It may be necessary to stop the system and to cast down the bridge with a long and difficult effort.

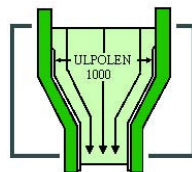


CHANNEL FLOW, IRREGULAR FLOW

In the conical section of bunkers, inappropriate friction between bunker wall and material causes congestion. Flow occurs only in the flat section in the middle. Narrowing creates the following problems:

- Decrease in available stock capacity
- Irregular flow
- Damages in level control
- Degradation of immobile material over time

Even expensive and exhausting operations such as air shocks, air hammers, stabbing etc. are often insufficient.



SOLUTIONS, ULPOLEN® LINING

In the bunkers and silos lined with Ulpolen® :

- Flow is regular
- Bridging is prevented.

Leader in engineering plastics production since 1971



EFALON®, PTFE T-100



EFALON® is Polikim's PTFE material.

It has superior properties that can't be found in combination in any other material. It is resistant to all chemicals used in manufacturing and can be used between -260°C and +270°C. Nothing sticks onto its surface and is more slippery than ice.

KESTAMID®, PA6G Standard



With its outstanding mechanical, physical and chemical properties, **KESTAMID®** is one of the most commonly used engineering plastics. **KESTAMID®** has good impact and wear resistance and fatigue strength. It is engineering plastic replacing metals.

ULPOLEN®, UHMWPE



ULPOLEN® is a type of polyethylene with very high molecular weight. Its density and water absorption are low. **ULPOLEN®** has very different properties than HDPE. It has utmost impact and wear resistance. Its coefficient of friction is low. Its chemical resistance and electrical properties are good.



Polikim A.S.
İstanbul Cad. No.63
41410 Gebze - Kocaeli
TURKEY

Tel : +90 262 - 653 2643
Fax : +90 262 - 653 6142
E-mail : polikim@polikim.com.tr
www.polikim.com.tr