

conductive  
backing

- Two layer material
- Rugged synthetic rubber
- Resistant to solder and heat
- Abrasion resistant
- Halogen free
- Elastic
- Volume conductive
- Thickness: 2 mm
- Includes 2 x 10 mm snap fastener and rounded edges\*



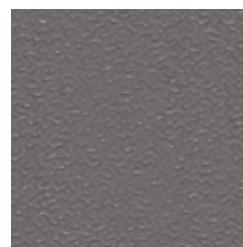
Profile

IEC  
EN



Part Nr.	Colour	Standard Sizes
<b>1402.662.L*</b>	Beige	610 x 1220 mm
<b>1402.662.S*</b>	Beige	610 x 900 mm
<b>1402.662.R</b>		rolls: 1220 mm x 10 m
<b>1402.662.R10</b>		rolls: 1000 mm x 10 m
<b>1402.662.R61</b>		rolls: 610 mm x 10 m
<b>1402.662.Z</b>		Custom sizes available on request

\*rounded edges (radius approx. 43 mm)



Part Nr.	Colour	Standard Sizes
<b>1402.663.L*</b>	Platinum grey	610 x 1220 mm
<b>1402.663.S*</b>	Platinum grey	610 x 900 mm
<b>1402.663.R</b>		rolls: 1220 mm x 10 m
<b>1402.663.R10</b>		rolls: 1000 mm x 10 m
<b>1402.663.R61</b>		rolls: 610 mm x 10 m
<b>1402.663.Z</b>		Custom sizes available on request

\*rounded edges (radius approx. 43 mm)



Part Nr.	Colour	Standard Sizes
<b>1402.664.L*</b>	Green	610 x 1220 mm
<b>1402.664.S*</b>	Green	610 x 900 mm
<b>1402.664.R</b>		rolls: 1220 mm x 10 m
<b>1402.664.R61</b>		rolls: 610 mm x 10 m
<b>1402.664.Z</b>		Custom sizes available on request

\*rounded edges (radius approx. 43 mm)



Part Nr.	Colour	Standard Sizes
<b>1402.665.L*</b>	Light blue	610 x 1220 mm
<b>1402.665.S*</b>	Light blue	610 x 900 mm
<b>1402.665.R</b>		rolls: 1220 mm x 10 m
<b>1402.665.R10</b>		rolls: 1000 mm x 10 m
<b>1402.665.R61</b>		rolls: 610 mm x 10 m
<b>1402.665.Z</b>		Custom sizes available on request

\*rounded edges (radius approx. 43 mm)